

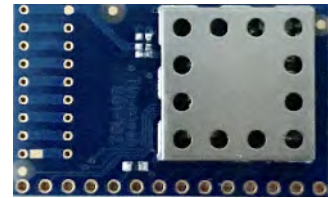
Tinymesh

CONNECT · COMMUNICATE · CONTROL

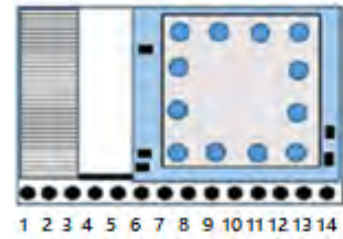
TM4670-210 TinySix Plug-in Board

Unique Technology Features

- ▶ Ready to use plug-in board with TinySix 6LoWPAN stack
- ▶ Performance optimized on-board PCB antenna
- ▶ RF frequency 865-867 MHz
- ▶ No external components required
- ▶ Configurable link level acknowledgement
- ▶ IS16444 compliant network communication board
- ▶ Up to 14 dBm Tx-Power
- ▶ RX Sensitivity @50Kbps: -110 dBm
- ▶ Immunity support for 35kV and jammer test
- ▶ Power Supply Tx: 24 mA, Rx: 5.4 mA
- ▶ Supply voltage 1.8V- 3.8V
- ▶ Size: 22 X 35 mm, 14 pins, hole pitch-2.54mm



TM4670-210 -Size: 22x35mm (14-pin Through Hole)



Key Applications

- ▶ Smart Energy Meters
- ▶ Smart Grid Systems
- ▶ IoT Applications
- ▶ Wireless Sensor Networks
- ▶ Smart Cities

TinySix 6LoWPAN Stack Highlights

- ▶ Mesh network: Self-forming, self-healing and self-optimizing
- ▶ Mesh - RPL type routing
- ▶ Wireless OTA configuration
- ▶ AES 128 encryption , support for multiple keys
- ▶ IEEE 802.15.4.g compliance
- ▶ Support for SLIP UART Interface
- ▶ Upcoming variant with FOTA and CoAP support

Pin Description

Pin#	TM4670-210
1	TMSC
2	TCKC
3	RF RX LED
4	CONNECT LED
5	VDD
6	GND
7	RTS
8	CTS
9	UART RXD Input
10	UART TXD Output
11	RESET Input
12	GPIO
13	GPIO
14	GPIO

Tinymesh

EASIER & SMARTER

India Office:
Tinymesh Radiocrafts India
The Atrium - Quark City
A-45, Industrial Area 8-B
Mohali-160059, Punjab, India

Tel.: +91-172-5096234
E-mail: sales@tmrcindia.com
Homepage: tinymesh.com

Norway Office:
Tiny Mesh AS
c/o CWi Moss AS
M:6, Elisabeth von Hübschs gate 6
1534 Moss, Norway

Tel: +47-92268419
E-mail: support@tinymesh.com
Homepage: tinymesh.com